



ELECTRON ENGINEERING

A Complete Electrical Solution



Address: Haque Villa (1st floor),
House #8, Road #4, Mirpur-10,
Dhaka-1216, Bangladesh
Tel:0961 1648497, Hp:+8801717703153
Email: electron.service.bd@gmail.com
Web: electronsrbd.com

Follow us:   

Authorized Solution Provider for
Lightning, Surge Protection and Grounding System

 furse

Power and productivity
for a better world™

 ABB

CONTENTS

1	Introduction and Statement
2	Our Services
3	BusBar Trunking System
4	Castresing Transformer
5	Sub-station Panel
6	Grounding Principle
7	Substation Grounding
8	Grounding Component
9	Working Reference

INTRODUCTION & STATEMENT

Introduction

Electron Engineering is one of the leading and fast-growing company in Electrical field. The Company has been reached renowned position by its skill and safety performance. Electron Engineering has founded by a group of experienced professionals having excellent technical knowledge, skill, managerial expertise in electrical field. The aim of Electron Engineering is to provide ensure and safety environment for employee to accelerate and sustainable business growth for client through implementation of its own innovative advanced marketing strategies.

Electron Engineering provide high quality engineering service in Electrical field which is very essential in RMG, Textile and any other productive factories. We prior to safe and low energy consumer in RMG, Textile and Factories. We are certified to provide electrical and Consultancy those are working under ACCORD, Allaince, BNBC, ILO, DIFE, RSC and for Bangladesh worker safety.

Our Vision

“ Our vision is to focus on environmental activities to benefit society.

We are committed to achieving business and financial success while leaving a positive imprint on society. ”

Our Mission

Our mission is to be the UK's leading contracting company focused on customer satisfaction. We seek to produce increased financial rewards and provide opportunities for growth and enrichment to employees, striving for honesty, reliability and integrity within the company.

Our Values

Our values guide the way we work with our business partners, within our communities and with each other. Through our values, we have created a company culture where ideas can blossom, people can thrive and success can flourish.

Saddam Ahamed

Engr. Saddam Ahamed

Managing Partner
Electron Engineering

We are able to offer a complete range of services for all types of industrial and commercial projects. Our full range of services listed below:

Busbar Trunking Systems

- Supply, Testing and Commissioning •
- Power and Lighting BBT •
- Rising and Machine BBT •



Switchgear Solution

- Medium Voltage (MV) Switchgear •
- Low Voltage (LV) Switchgear •
- Low Voltage Distribution Board •
- Control & Monitoring Panels •



Diesel Generator and Acoustic Solution

- Supply, Testing and Commissioning •
- Diesel Generator •
- Acoustic Solution •



Cable Tray and Cable Ladder

- Mains Distribution Systems •
- Power & Lighting Systems •
- Fire Detection Systems •
- Internal Wiring •
- Solar roof and Solar power plant slutions •



Lightning Protection & Grounding System

- Lightning Protection System •
- Grounding System •
- Surge Protection System •
- Supply Materials •



Electrical Inspection & Testing

- Fixed Wiring Inspection & Testing Reports •
- Installation work up to 400kV •
- Single Line diagram SLD •



THE BUSBAR SYSTEM



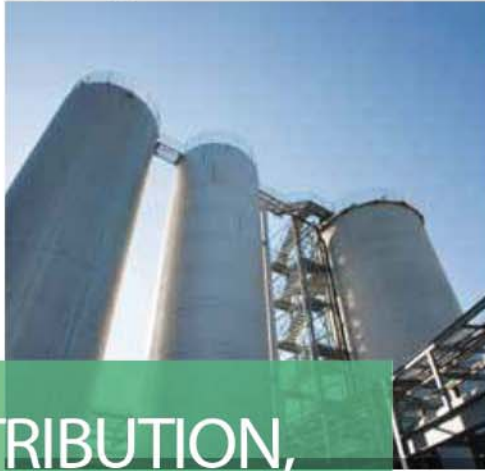
The busbar is the most modern solution for the distribution of energy in an installation for machinery, equipment and lighting fittings, in all types of buildings such as warehouses, trade fairs.

The busbar is also frequently used to power the (horizontal and vertical) backbones of buildings used for the commercial-service sectors, thus observing the time required for the installation and providing a final solution with remarkable technical advantages.

Our busbars, available in 3 segmented ranges (Low Power, Medium Power and High Power), are able to meet all installation requirements, from 25 A to over 6300 A.



CAST RESIN TRANSFORMERS



FOR DISTRIBUTION,
RECTIFICATION,
TRACTION AND
SPECIAL SOLUTIONS



GLOBAL SPECIALIST IN ELECTRICAL
AND DIGITAL BUILDING INFRASTRUCTURE

The type test Panel solution



Enhanced safety and reliability within your reach

Embodying decades of expertise, Blokset are engineered to be complete and personalized solutions for low voltage (LV) switchboards for power distribution and motor control. Blokset switchboards answer the need for operational safety in today's high performance LV power applications. Versatile and durable, Blokset switchboards have the comprehensive capabilities and intelligence you need to keep your business competitive.

Greater reliability, flexibility, and intelligence

Blokset solutions combine industry-leading features and designs with Schneider Electric support to make implementation and operation quick and reliable so that you can lower costs and realize a faster return on your investment. A fully functional switchboard with built-in intelligence for energy efficiency, Blokset is a simple and modular solution. It is easy to choose, intuitive to use, cost effective, and simple to install and upgrade.

Benefits at a glance

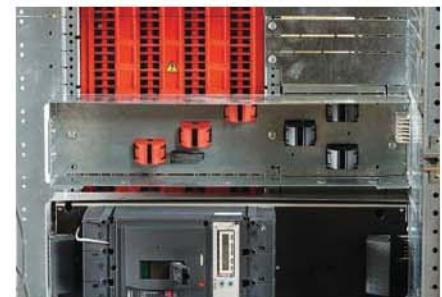
- High quality design for safety and performance
- High continuity of supply, even in severe environments
- Smart solutions for energy savings and optimized operation
- Pre-engineered modular architecture for easy implementation
- Quick return on investment
- Localized support and services for ease of ownership.

500 k

More than 500,000 cubicles installed. Blokset LV switchboards are trusted by customers worldwide



Double front access



Plug-in distribution feeders on Polyfast system



Comprehensive range of full and half-width drawers



Direct connection to the arc-free vertical busbars

High performance and superior efficiency

Compact, modular design - the right fit for your organization

Industry-leading capabilities

- Maximum busbar rating up to 7000 A
- Maximum rating of Power Control Center (PCC) up to 6300 A
- Maximum rating of Motor Control Center (MCC) up to 250 kW
- Smart communicating devices for connected switchboards
- Compact design for higher stacking density and optimized footprint
- Upgradeable energized equipment.

A disconnectable design for power distribution

The power distribution architecture is designed to offer reinforced electrical isolation.

Power distribution

Power Control Center (PCC) including protection and power factor correction:

- Main busbar up to 7000 A
- Incomers up to 6300 A (Masterpact™ circuit breakers)
- Feeders up to 6300 A (Masterpact™ circuit breakers) and 630 A (Compact™ circuit breakers)
- Power factor correction up to 540 kVAR.

A flexible, withdrawable design for motor control and power distribution

Compact and powerful switchboards answer the needs of the very demanding motor control and power distribution applications. Combining continuity of supply and reliable operational services.

Motor control

Motor Control Center (MCC) including protection, starters, and drives:

- Conventional starters up to 250 kW
- Soft starters up to 250 kW
- Drives up to 160 kW.



15%

Blokset solutions can provide up to 15% energy savings ¹⁾

7000 A

Electrical distribution up to 7000 A

6300 A

Incomer and feeder up to 6300 A

250 kW

Motor control up to 250 kW

...with our functional LV systems





Avoid hazardous Step and Touch Potentials (shock) or even death by low impedance grounding and bonding between metallic equipment, chassis, piping, and other conductive objects so that currents, due to faults or lightning, do not result in hazardous voltage rise.

Step and Touch Potential

Step Potential

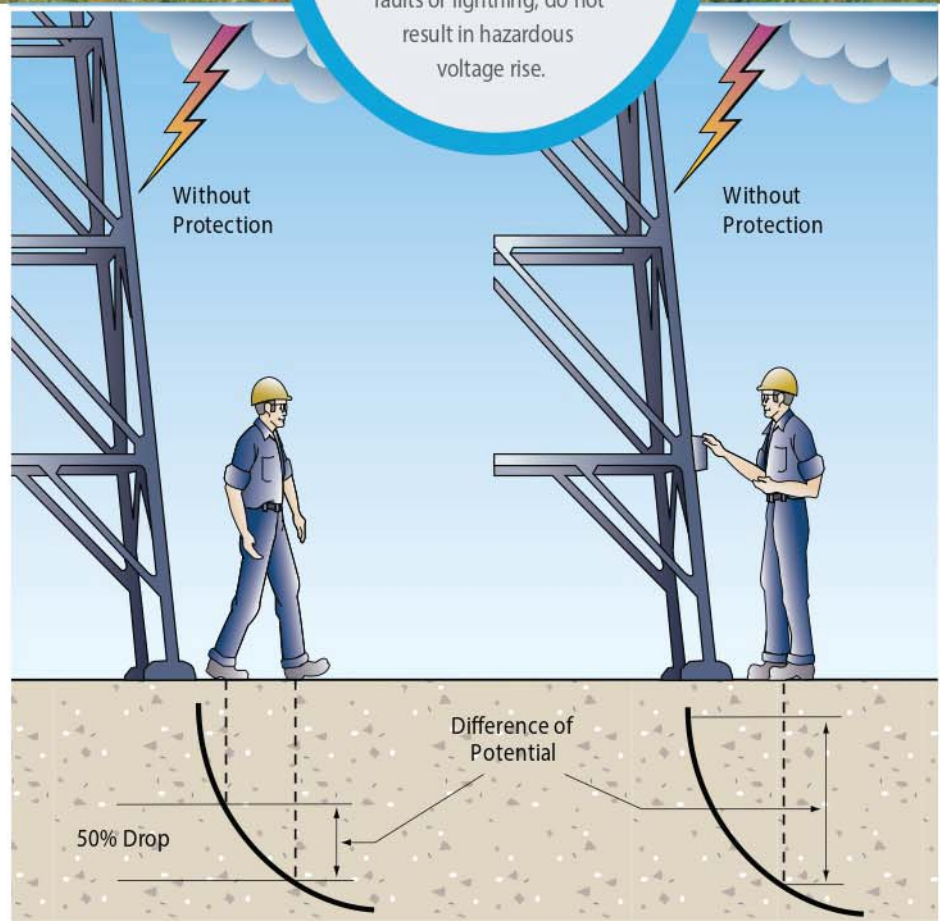
Step Potential is the voltage difference between a person's feet caused by the dissipation gradient of a fault entering the earth.

Touch Potential

Touch Potential is similar to "Step Potential" except that the fault current passes through the person's arm and torso on the way to the ground.

Another function of the grounding system is to provide a reference for circuit conductors to stabilize their voltage to ground during normal operation. The earth itself is not essential to provide a reference function; another suitable inductive body may be used instead.

The function of a grounding electrode system and a ground terminal is to provide a system of conductors, which ensures electrical contact with the earth.



Busbar Trunking System Installation LPS, SPD and Grounding System and Electrical Works

1. AA knit spin Ltd.
2. Shiplu textile Mills Ltd.
3. Square Textile Mills Ltd.
4. Snowtex Outerwear Ltd
5. Nilorn level factory
6. Azim and son Garments Ltd.
7. Pentagon Garments
8. Shiplu Rotor
9. Waseq Group
10. P A knit composite
11. AKH Knitting and Dyeing Ltd.
12. American International University
13. Rajshahi New Govt. Degree College

1. Eastern Housing Ltd.
2. Nova Electronics Ltd.
3. Eastern Housing Ltd. (
4. CSCEC
5. Queen South Textile Mills Ltd.
6. BSTI
7. Borak Real Estate Ltd.
8. Mirpur Buddhijibi Kobarsthan
9. Nova Electronics Ltd.
10. Bengal Development
11. Bengal NFK Textile Mills Ltd.
12. Erebus Plastic Industries Ltd.
13. Queen South Textile Mills Ltd.
14. Medipus Toothpaste Factory
15. Rupayan City Uttara Phase-4

16. Reverie Automation
17. Square Informatix Ltd.
18. Fully Furnish Ltd.
19. Borak Real Estate Ltd.
20. Adabor Society Project
21. Square Pharmaceutical Ltd
22. National Telecommunication Monitoring Center (NTMC)
23. Suraiya's Centre (Eastern Housing)
24. Thikana, Dhanmondi
25. Bely Heights, Banani (SpaceZero)
26. Exim Bank head office, Gulshan-1
27. BSRM (H. Akberali & Comp. Ltd.)

28. Metro Rail Line-6 (Earthing System)
29. Keya Cosmetics Ltd.
30. Grameenphone Chittagong Office
31. Chittagong club at Chattogram
32. Shurjodoy, Banani
33. Trimatric Architects & Engineers
34. Win Pro Textile Ltd.
35. Navy Anchorage School
36. Queen South Textile Mills Ltd.
37. Vitti Sthapati Brindo
38. Simpletree GSR (Continue)
39. Simpletree Attalika (Continue)
40. Simpletree Mahbub+ (Continue)



Waseq Group



Shiplu Textile Mills Ltd.



Waseq Group



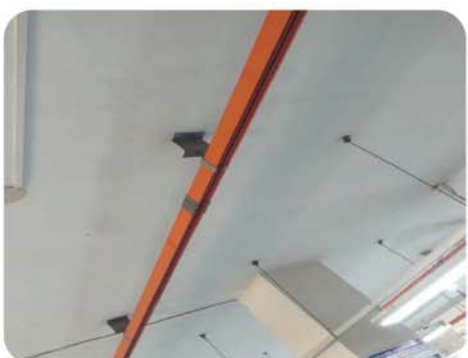
Square Textile Mills Ltd.



A.A knit spin Ltd.



A.A knit spin Ltd.



Azim and son Garments Ltd



Thermal Scanning



Earth Resistance test

Project Reference:



Queen South Texlite Mills Ltd.



Chittagong club at Chattogram



National Telecommunication Monitoring Center (NTMC)



Spacezero Ltd. (Shurjodoy Project)



Exim Bank Head office Gulshan-1



Grameenphone Chittagong Office



Mediplus Toothpast Factory



Square Informatix Ltd.



Bengal NFK Textile Mills Ltd.



Our ABB LPS System.



Our Conventional LPS System



Our ABB LPS Testing Kits



Thank You



ELECTRON ENGINEERING

A Complete Electrical Solution



[www.facebook.com/
electronengineeringltd](http://www.facebook.com/electronengineeringltd)



[www.linkedin.com/company/
electron-service-bd](http://www.linkedin.com/company/electron-service-bd)



[www.Twitter.com/company/
electron-service-bd](http://www.Twitter.com/company/electron-service-bd)



Get In Touch

Adress: Haque Villa (1st floor)
House #8, Road #4, Mirpur-10
Dhak-1216, Bangladesh

Tel: 09611648497, Hp: +8801717703153

Email: electron.service.bd@gmail.com

Web: electronsrbd.com



ABB

furse